

Type:

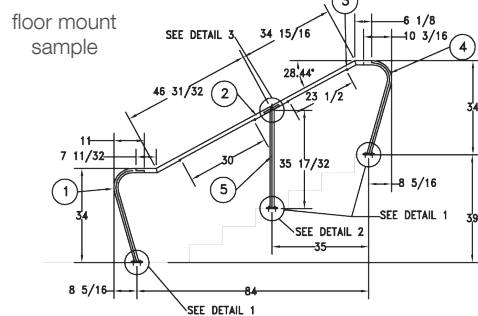
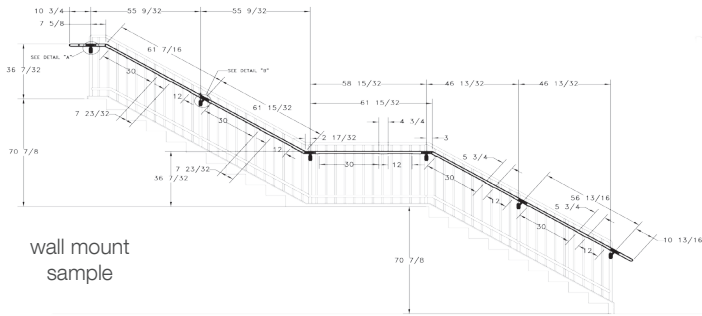
Ordering Code:

Job Name:

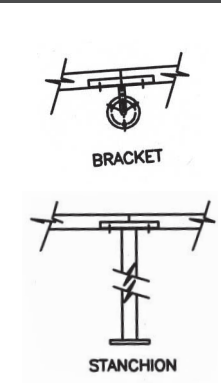
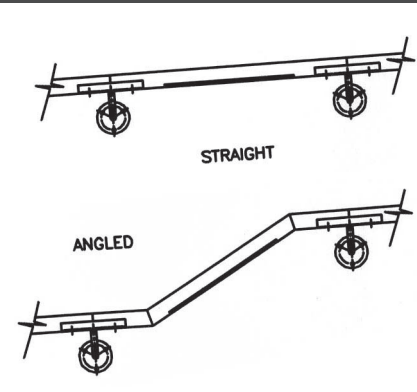
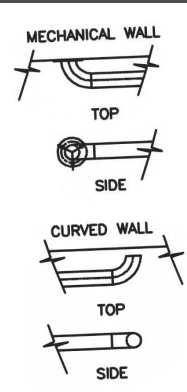
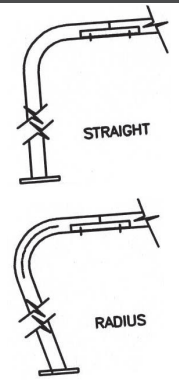
Notes:

### LONGITUDE

#### sample designs



#### beginning and ending supports      illuminated section types      middle supports



#### How To Specify

Every handrail is custom designed and manufactured to your specific project requirements. Architectural and/or Engineering drawings are required that clearly show the desired configurations and locations. These drawings should include field dimensions, angles, slopes, lengths, heights, support spacing, etc. For stairwell applications, the size of the stairs or nose to nose dimensions may be required. A detailed drawing summarizing your requirements will be provided by Beacon Products prior to production for your field verification and approval. Lighting aperture angle and orientation could be specified.

#### ORDERING EXAMPLE: LON / 120V / 3000k / 90 / STA

model	voltage	color temp.	aperture	orientation
LON	120V	3000K	40°	STA standard
	208V	3500K		
	240V	4100K	90° standard	RT right
	277V	5700K	120°	LT left
			other	specify

**GENERAL:** Even though our lighted handrail is custom built and adaptable, it conforms to certain codes and structural requirements. It can either be post mounted or wall mounted.

The maximum length we recommend is 4' between supports, which can be brackets or stanchions. The geometry of the site and the customer's choice will determine the most suitable solution.

Our lighted modules vary from 11.5" to 38". Lighted sections are available as small as 18" in length. Modules can be daisy chained up to 100W per circuit. Lengths requiring over 100W requires an additional driver.

Drivers are remote mounted and the power feed supply can be done through the wall brackets or from the ground through the vertical or angled stanchions. If placed in grade, drivers shall be installed in waterproof enclosure or in an electrical room.

Each LED module is a stand alone unit and can be serviced on site without dismantling the entire run.

Individual sections of handrail can be replaced without compromising the structural integrity of the assembly.

**DRIVERS:** Power supplies are compact and electronically stabilized. The wide range of input voltage (100-277VAC 50/60hz), enables worldwide use on single-phase AC power lines. These supplies are available up to 54 VDC outputs.

Normal Input Voltage (VAC)	100-277
Nominal Input Current (Amps)	0.9/0.39
Power Factor	0.99
Nominal Input Power (W)	108
Output Voltage (VDC)	24.0 ± 0.5
Output Power Range (W)	0.8-96
Max. Line Ripple (V)	± 1.0
Location Rating	WET
Ambient Temp. Range (°C)	-30°C through +70°C
Max. Case Temp	90°C

**LED MODULES:** High brightness LED package for high efficiency, up to 32.4 LPW, easy board to board connector with integrated pins, service life up to 50,000 hours when temperature is maintained at specific TC point, 90° beam angle, no ultraviolet or infrared radiation.

Number of LEDs	4	8	12
Module Length (In)	11.5	26.5	38
Power (W)	3.7	7.4	11.2
Color Temperature (K)	4100	4100	4100
Absolute Lumen (Lm)	120	239	358
Beam Angle	90°	90°	90°
Efficacy (Lm/W)	32.4	32.3	32.0

