

Type:

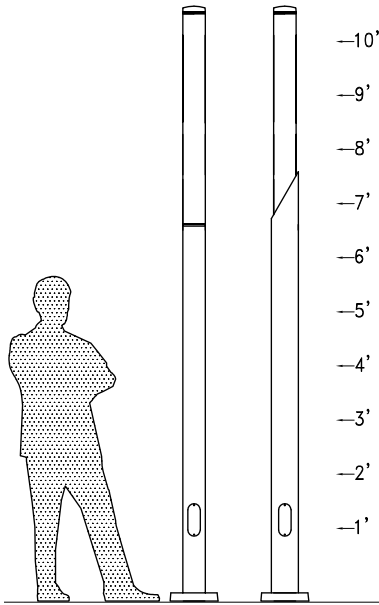
Ordering Code:

Job Name:

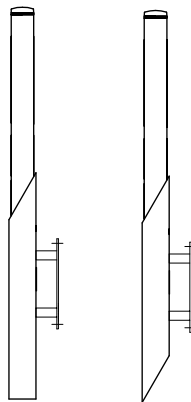
Notes:

505

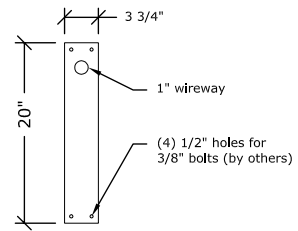
Ground Mounted



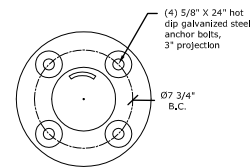
Wall Mounted



Wall Mounted



Anchor Bolt Pattern



ORDERING EXAMPLE: 505 / 12 / AW / 4 / 17-T8 / 3000 / LSP / BB

model	height	lens	# of lamps	lamp type	color temp.	mounting	electrical options	color
505	8 8'	AW acrylic white	4	17-T8 17W LED T8 tube	3000 3000K	AB anchor base	PEC photocell	BB black
	4000 4000K				DBE direct burial extension	LSP lightning protection	BZ bronze	
							BW white	
							BG green	
	12 12'							BY gray
	14 14'							MB metallic bronze
								MT metallic titanium
								___ RAL
								___ other

GENERAL: Each Beacon LIGHT COLUMN is a 5" diameter aluminum luminaire with a 5" diameter translucent white acrylic outside tube that is provided with two, three or four, 17-watt LED T8 frosted Tubes.

LED T8 LAMPS: T8 LED lamps have an internal power supply and are rated at 17 watts per lamp producing 1500 lumens at color temperatures of 3000k or 4000k. They are rated at a CRI of 80. Life expectancy is a minimum of 50,000 hours.

Electrical: T8 LED tubes are U.L. approved per UL 1598 as a luminaire conversion retrofit lamp. The T8 LED lamps require 85VAC to 277VAC to operate properly. The T8 lamps fit in standard T8 lamp sockets and do not require an auxiliary ballast or starter.

UPPER CAST DOME: A removable cast aluminum dome top secures the 5" diameter acrylic tube to the lower 5" diameter aluminum tube and it is removable for servicing without the use of tools.

UPPER TUBE: Shall be translucent white, impact resistant, UV Stabilized, acrylic with a .125" wall, and a nominal length of 4'.

LOWER TUBE: Shall be .125" wall 6063-T5 extruded 5" diameter aluminum tube that is welded to a round cast aluminum vandal resistant base. The length of the lower tube will produce a light column with nominal lengths of 8', 10', 12', or 14'.

FASTENERS: All fasteners shall be stainless steel. When tamper resistant fasteners are required, spanner HD (snake eye) style shall be provided (special tool re-quired, consult factory).

ANCHORAGE: Four 5/8" X 24" high strength steel anchor bolts hot-dip galvanized after fabrication on a 7 3/4" bolt circle.

AGENCY CERTIFICATION: The luminaire shall bear an NRTL label and be marked suitable for wet locations.

WARRANTY: Beacon luminaires feature a 5 year limited warranty for the product and a three year warranty for the LED lamps. . See Warranty Information on www.beaconproducts.com complete details and exclusions.

