

Mailboxes
ordering guide



ordering logic

mailbox

- GOMB Grey Oaks Mail Box
- WFMB Woodfield Mail Box
- CTMB China Terrace Mail Box
- BFMB Bakersfield Mail Box
- TCMB Town & Country Mail Box

base

- VALS-F-XX Valdarno
- CENA-F-XX Centennial A
- GREY-S-XX Greystone
- HIGH-F-XX Highlander
- OTHER _____

style options (see next page)

- STYLE-1 Single on a 3" dia. fluted post
- STYLE-2 Single, 16" scroll bracket, ball finial, on a 3" dia. fluted post
- STYLE-3 Single, banner arm, hanging address plate, ball finial on a 3" dia. fluted post
- STYLE-4 Single, 16" scroll bracket, on a 3" dia. fluted light post
- STYLE-5 Single, banner arm, hanging address plate, on a 3" dia. fluted light post
- STYLE-6 Double, 8" scroll bracket, ball finial, on a 3" dia. fluted post
- STYLE-7 Double, banner arm, hanging address plates, ball finial, on a 3" dia. fluted post
- STYLE-8 Double, 8" scroll bracket, on a 3" dia. fluted light post
- STYLE-9 Double, banner arm, hanging address plates, on a 3" dia. fluted light post

mounting

- DBE Direct Burial Extension (Standard)
- ANB Anchor Base

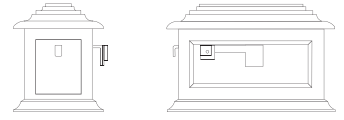
options

- NEH Newspaper Holder
- RHEP Header Paddle
- ADP Address Plate

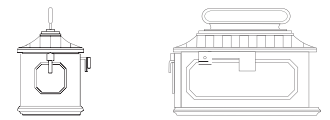
color

- PRE Premium Colors & Finishes (specify)
- BB Black
- BZ Bronze
- BG Green
- WH White
- BY Gray
- RAL RAL# _____

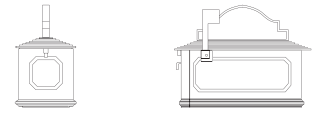
mailbox styles



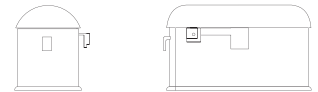
Grey Oaks Mailbox



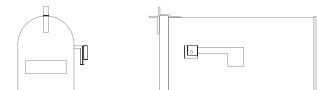
Woodfield Mailbox



China Terrace Mailbox



Bakersfield Mailbox

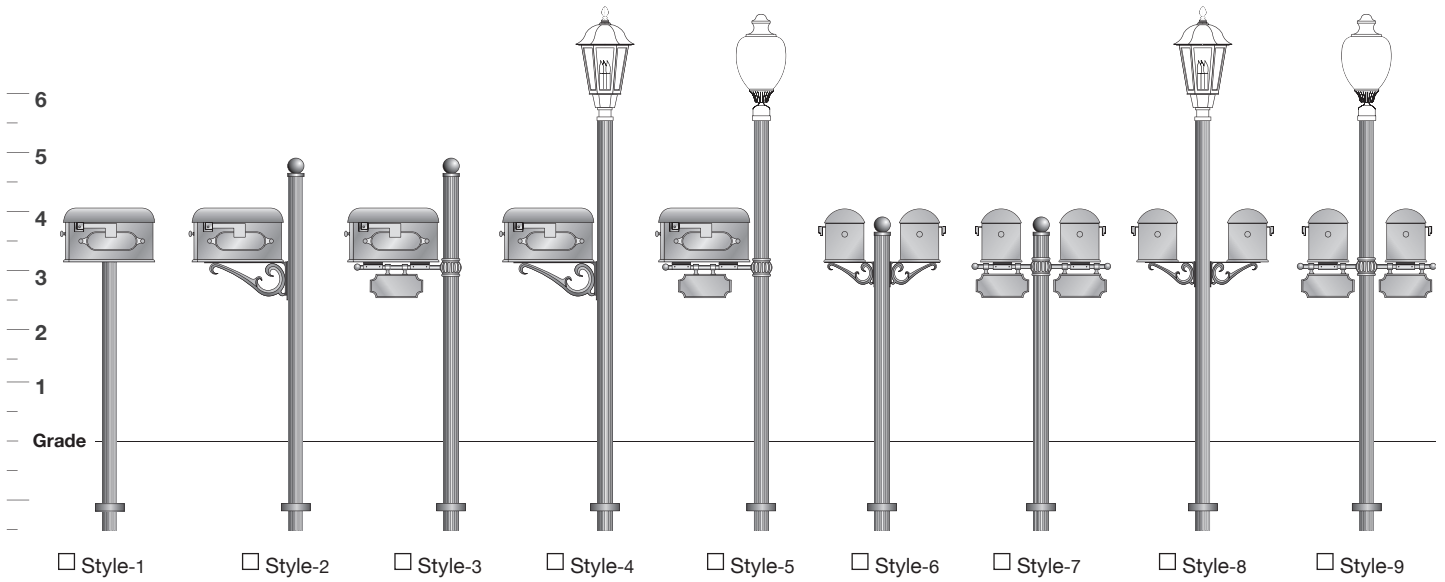


Town & Country Mailbox

Mailboxes
ordering guide



Mounting Styles



Specifications

The mailboxes and mounting brackets shall be all aluminum and one-piece construction. Manufactured in accordance with the specification of the U.S. Post Office and The Postmaster General.

Construction

The mailbox shall be fastened to a post top bracket, scroll arm or welded directly to the post clamp.

Materials

The mailbox shall be heavy wall, produced from certified ASTM 356 marine grade aluminum. The mailbox shall have an approved closure mechanism and all hardware shall be stainless steel.

Installation:

The mailbox shall mount to the top of the mounting bracket using stainless steel fasteners. The bracket shall also mechanically mount to the pole shaft using stainless steel fasteners.

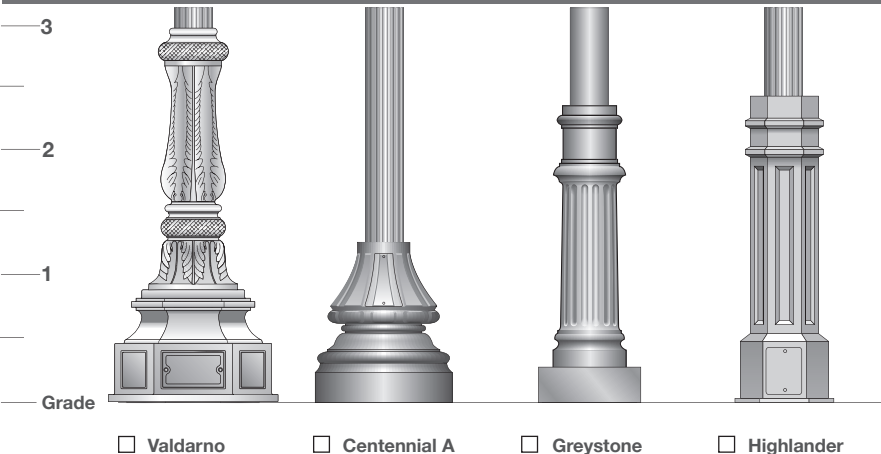
Vinyl Letters & Numbers



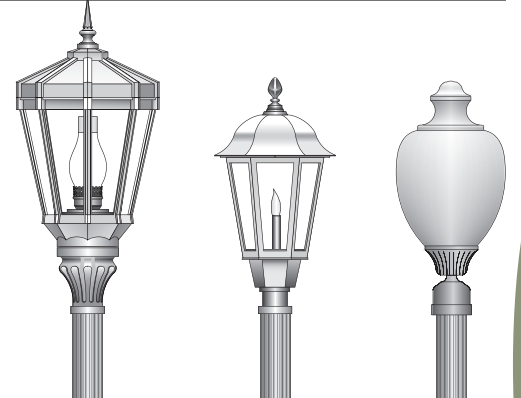
Notes

Consult factory for additional fixture and base options
Consult factory for custom lettering fonts and address styles

Bases



Suggested Luminaires



Refer to luminaires for additional options